

MANDATORY DISCLOSURE 2024-25



SYMBIOSIS INSTITUTE OF TECHNOLOGY, MOUJE – WATHODA (SIT, Nagpur)

Constituent of Symbiosis International (Deemed University)

(Established under section 3 of the UGC Act, 1956)

Re-accredited by NAAC with ‘A++’ grade | Awarded Category – I by UGC

Founder: Prof. Dr. S. B. Mujumdar, M. Sc., Ph. D.

Enquiry: +91 7126192368 / 9823356929; Email: director@sitnagpur.siu.edu.in;

Website: <https://sitnagpur.edu.in/>

SYMBIOSIS INSTITUTE OF TECHNOLOGY, MOUJE – WATHODA**Mandatory Disclosure Appendix 10****1. Details of Institutions**

Name of the Institution	SYMBIOSIS INSTITUTE OF TECHNOLOGY, MOUJE – WATHODA
Address and Map	Mouje - Wathoda
Village/Taluka	Nagpur
District/ Pincode	440008
State/UT	Maharashtra
Longitude & Latitude	79°16'23"E, 21°12'59"N
Phone No. with STD Code	+91 7126192368
Office hours at the Institution	09:00 AM to 05:00 PM (Monday to Saturday)
Academic hours at the Institution	09:00 AM to 05:00 PM (Monday to Saturday)
E-mail	director@sitnagpur.siu.edu.in
website	https://sitnagpur.edu.in/
Nearest Railway Station (dist. in km)	Nagpur-Junction (10 km)
Nearest Airport (dist. in km)	Sonegaon-Nagpur (17 km)

2. Name and address of the Society/ and the Trustees running the Institution

Name of the organization running the Institution	Symbiosis Society
Type of the organization	Society
Trustee	Prof. (Dr.) S. B. Mujumdar
Address of the organization	Senapati Bapat Road, Pune - 411004
Telephone No.	+91-20-25652444
Registered with	(a) Society's Registration Act of XX1 of 1860 (Regtd. No. MAH-679-PN) (b) Bombay Public Trust Act of 1850 (No.F/481/Pune 26.02.1971)

SYMBIOSIS INSTITUTE OF TECHNOLOGY, MOUJE – WATHODA**Mandatory Disclosure Appendix 10****3. Name and address of the Director**

Name of the Director	Prof.(Dr.) Nitin Rakesh
Exact Designation	Professor and Director, Symbiosis Institute of Technology, Mouje - Wathoda, Nagpur
Phone No. with STD Code	+91 7126192361
E-mail	director@sitnagpur.siu.edu.in

4. Name of the affiliating University

Type	Constituent of a Symbiosis International (Deemed University)
Category (1)	Non-Minority
Category (2)	Co-Ed

5. Governance

In accordance with the decision taken by the University authorities, it is hereby notified for information of all concerned that the Board of Management (BoM) of Symbiosis International University has been reconstituted in accordance with Rule7(b)of Rules & Regulations 2002 of the University.

The following are the members

1.	Dr. Ramakrishnan Raman, Vice Chancellor	Chairperson
2.	Dr. Vidya Yeravdekar, Principal Director, Symbiosis	Member
3.	Dr. Rajiv Yeravdekar, Provost, Faculty of Medical and Health Sciences	Member
4.	Dr. Shashikala Gurpur, Dean, Faculty of Law	Member
5.	Dr. Ketan Kotecha, Dean, Faculty of Engineering	Member
6.	Dr. Swati Mujumdar, Member, Managing Committee, Symbiosis, Pune	Member
7.	Prof. K.N. Ganesh, Founder Director, Indian Institute of Science Education and Research (IISER), Tirupati	Member
8.	Dr. Bhimaraya Metri, Director, Indian Institute of Management (IIM), Nagpur	Member
9.	Dr. Rajan Saxena, Former Vice Chancellor, SCKM's NMIMS (Deemed to be University), Mumbai	Member
10.	Mr. Prashant Girbane, Director General, Mahratta Chamber of Commerce, Industries and Agriculture	Member
11.	Dr. Prasanna Kulkarni, Associate Professor, SIDTM	Member
12.	Dr. Yogesh Patil, Professor, SIIB	Member
13.	Dr. M. S. Shejul, Registrar, SIU	Non-Member Secretary

SYMBIOSIS INSTITUTE OF TECHNOLOGY, MOUJE – WATHODA**Mandatory Disclosure Appendix 10****Members of the Academic Council of the University**

In accordance with the decision taken by the University authorities, it is hereby notified for the information of all concerned that the Academic Council (AC) of Symbiosis International University has been reconstituted following Rule 10 of Rules and Regulations 2002 of the University.

The following are the members

1.	Dr. Ramakrishnan Raman, Vice Chancellor	Chairperson
2.	Dean, Faculty of Law	Member
3.	Dean, Faculty of Management	Member
4.	Dean, Faculty of Computer Studies	Member
5.	Dean, Faculty of Medical and Health Sciences	Member
6.	Dean, Faculty of Media and Communication	Member
7.	Dean , Faculty of Humanities & Social Sciences	Member
8.	Dean, Faculty of Engineering	Member
9.	Dean, Faculty of Architecture & Design	Member
10.	The Director, Symbiosis Law School (SLS), NOIDA	Member
11.	The Director, Symbiosis Law School (SLS), Hyderabad	Member
12.	The Director, Symbiosis Law School (SLS), Nagpur	Member
13.	The Director, Symbiosis Institute of International Business (SIIB), Pune	Member
14.	The Director, Symbiosis Centre for Management and Human Resource Development (SCMHRD), Pune	Member
15.	The Director, Symbiosis Institute of Management Studies (SIMS), Pune	Member
16.	The Director, Symbiosis Institute of Digital and Telecom Management (SIDTM), Pune	Member
17.	The Director, Symbiosis Centre for Management Studies, (SCMS), Pune	Member
18.	The Director, Symbiosis Institute of Operations Management (SIOM), Nashik	Member
19.	The Director, Symbiosis Institute of Business Management (SIBM), Bengaluru	Member
20.	The Director, Symbiosis School of Banking and Finance (SSBF), Pune	Member
21.	The Director, Symbiosis Centre for Management Studies (SCMS), NOIDA	Member
22.	The Director, Symbiosis Institute of Business Management (SIBM), Hyderabad	Member
23.	The Director, Symbiosis Institute of Business Management (SIBM), Nagpur	Member
24.	The Director, Symbiosis Centre for Management Studies (SCMS), Nagpur	Member
25.	The Director, Symbiosis Centre for Corporate Education (SCCE), Pune	Member
26.	The Director, Symbiosis Centre for Skill Development (SCSD), Nagpur	Member

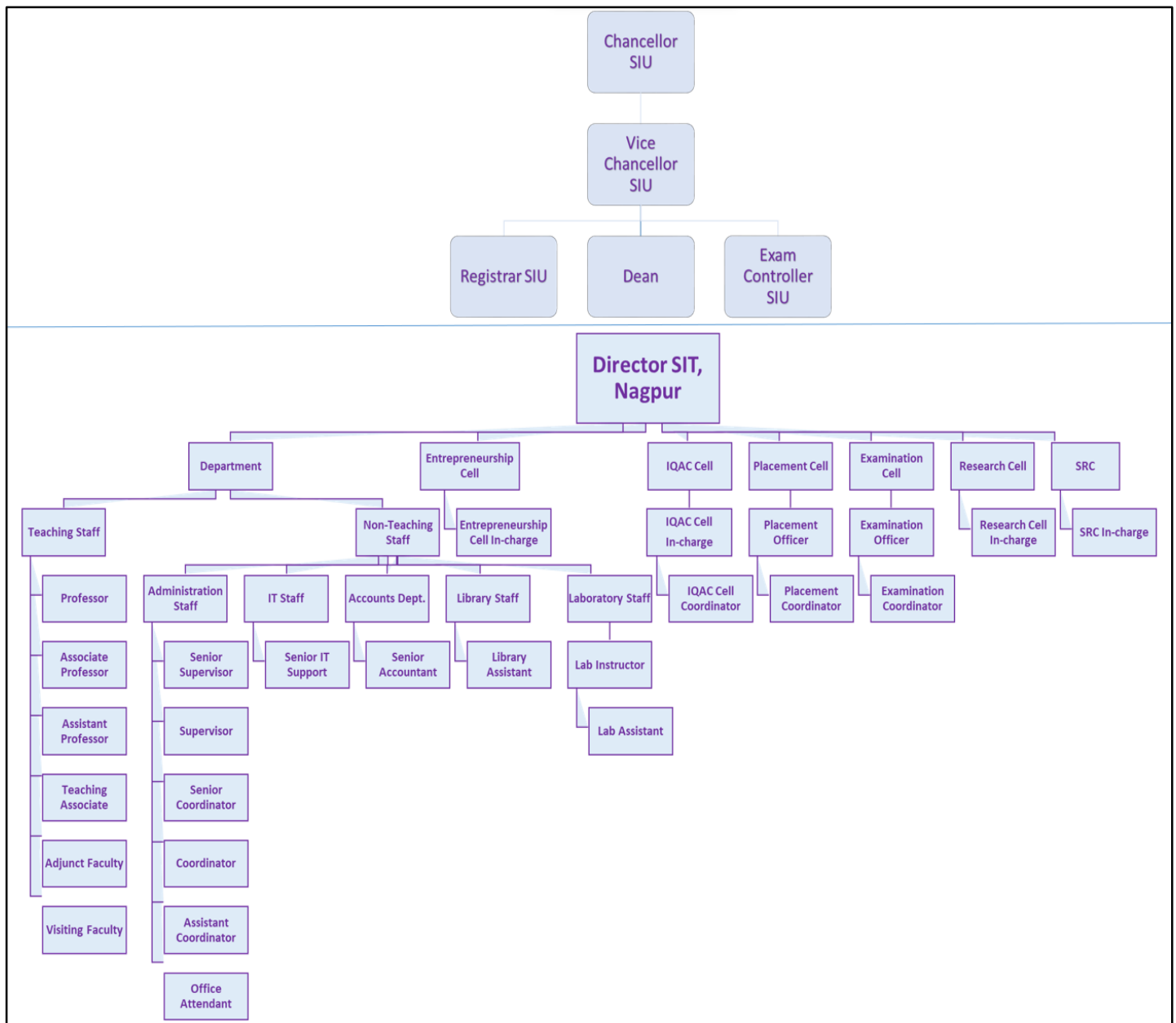
SYMBIOSIS INSTITUTE OF TECHNOLOGY, MOUJE – WATHODA**Mandatory Disclosure Appendix 10**

27.	The Director, Symbiosis Centre for Management Studies (SCMS), Bengaluru	Member
28.	The Director, Symbiosis Centre for Management Studies (SCMS), Hyderabad	Member
29.	The Director, Symbiosis Institute of Computer Studies and Research (SICSR), Pune	Member
30.	The Director, Symbiosis Institute of Health Sciences (SIHS), Pune	Member
31.	The Director, Symbiosis College of Nursing (SCON), Pune	Member
32.	The Director, Symbiosis School of Biological Sciences (SSBS), Pune	Member
33.	The Director, Symbiosis School of Sports Sciences (SSSS), Pune	Member
34.	The Director, Symbiosis School of Culinary Arts (SSCA), Pune	Member
35.	The Director, Symbiosis School for Open and Digital Learning (SSODL), Pune	Member
36.	The Director, Symbiosis Centre for Health Skills (SCHS), Pune	Member
37.	The Dean, Symbiosis Medical College for Women (SMCW), Pune & Symbiosis University Hospital and Research Centre (SUHRC)	Member
38.	The Director, Symbiosis School of Media and Communication (SSMC), Bengaluru	Member
39.	The Director, Symbiosis Centre for Media and Communication (SCMC), Pune	Member
40.	The Director, Symbiosis School of Visual Arts and Photography (SSVAP), Pune	Member
41.	The Director, English Language Teaching Institute of Symbiosis (ELTIS), Pune	Member
42.	The Director, Symbiosis School for Liberal Arts (SSLA), Pune	Member
43.	The Director, Symbiosis School of International Studies (SSIS), Pune	Member
44.	The Director, Symbiosis Statistical Institute (SSI), Pune	Member
45.	The Director, Symbiosis Institute of Geoinformatics (SIG), Pune	Member
46.	Dr. Sujata Joshi, Professor, SIDTM, Pune	Member
47.	Dr. Sonali Bhattacharya, Professor, SCMHRD, Pune	Member
48.	Dr. Pravin Metkewar, Professor, SICSR, Pune	Member
49.	Dr. Pravin Kumar Bhojar, Professor, SIMS, Pune	Member
50.	Dr. Kriti Priya Gupta, Professor, SCMS, NOIDA	Member
51.	Dr. Shilpa Parkhi, Professor, SIBM, Pune	Member
52.	Dr. Aradhana Gandhi, Professor, SIBM, Pune	Member
53.	Dr. Meena Sadashiv Laad, Professor, SIT, Pune	Member
54.	Dr. V.V. Ravi Kumar, Professor, SIBM, Pune,	Member
55.	Dr. Dipika Amarpritsingh Jaspal, Professor, SIT, Pune	Member
56.	Dr. Vaishali Mahajan, Associate Professor, SCMHRD, Pune	Member

SYMBIOSIS INSTITUTE OF TECHNOLOGY, MOUJE – WATHODA**Mandatory Disclosure Appendix 10**

57.	Dr. Shrikant Mapari, Assistant Professor, SICSR	Member
58.	Dr. Shaji Joseph, Assistant Professor, SCIT, Pune	Member
59.	Dr. Rajan Saxena, Former Vice Chancellor, NMIMS, Mumbai	Member
60.	Dr. G. Arun Maiya, Professor and Dean, Manipal College of Health Professions (MCHP), Manipal	Member
61.	Dr. Sudhirkumar Barai, Director, BITS Pilani, Pilani Campus	Member
62.	Mr. Abhishek Mhapatra, Director – Consumer, Communications, Amazon	Member
63.	Mr. M.S. Unnikrishnan, CEO, IIT – Monash Research Academy, Mumbai	Member
64.	Mr. Ravi Bharadwaj, Advocate, Founder – Edulegal	Member
65.	Mrs. Shraddha Chitale, CoE	Invitee
66.	Dr. M.S. Shejul, Registrar, SIU	Secretary

Organization Chart and Processes



Nature and Extent of Involvement of Faculty and Students in Academic affairs / Improvements: Following initiatives are carried out for faculty and students:

Faculty:

- Financial assistance is provided to the faculties for publications.
- Use of laboratories are extended to faculty as required.
- Funding is provided to the faculty to implement their research project. More experienced faculty are encouraged to apply for research grants from various Government and Non-Government, research funding agencies such as UGC, AICTE, MHRD, DST etc.
- Collaborative research partnerships with academic institutes and industry are encouraged.
- Assistance is provided for filing patents and the patents are fully funded by the Institute.
- The Industry Institute Interaction Cell (IIIC) works in close coordination with the industries and the institute to encourage both students and faculty to work on live projects. The departmental industry coordinator interacts with the industries by approaching local industries, to understand their expectations in terms of knowledge and skill requirements in a graduating engineer. IIIC, as part of the

SYMBIOSIS INSTITUTE OF TECHNOLOGY, MOUJE – WATHODA

Mandatory Disclosure Appendix 10

quality improvement strategy and to bridge the gap between academics and industry. Regular interaction with the industries is established through meetings, guest lectures, hands-on training sessions, internships, projects, and industrial visits. Obtain industry-sponsored final year projects

- An initiative is taken by the Library to help researchers in understanding recent updates of their publications in terms of citation index etc.
- In-house development of both lab equipment and software is carried out regularly.
- SIT believes that faculty and staff are the back bones of the institute and that its success depends on the quality of human resources. Therefore, the objectives of the human resource development department are focused on maximizing employee performance. Priority is given to train them to meet their teaching objectives, helping them realize their potential, counsel low-performing faculty based on their feed, back and appreciating the faculty showing excellent work the academic tenure.
- Training is arranged for teaching as well as nonteaching staff by identifying training needs, for enhancing professional competencies, teaching and soft skills · Service rules are transparent and benefits like Provident Fund, Gratuity, Group Insurance Scheme, Mediclaim etc. are provided to employees.
- The institute arranges financial planning lectures for staff, to assist them for effective planning of their finances
- The institute arranges lectures for staff, to assist them for effective stress management and health, regular health check-up facility is made available.
- Institute implements a variety of welfare schemes for teaching and non-teaching staff like Mediclaim Policy, Group Insurance, Provident Fund, Gratuity, Fee concession etc.

Students:

- Project Based Learning course is introduced in which a group of 3 to 4 students identify the problem and work on it as a small project. It can be called a mini project. Students can contact the faculty member to understand the problem. Apart from PBL few more courses like Tinker lab, Creative thinking Critical thinking, Design Thinking, Entrepreneurship venture, and Capstone courses have been introduced from the first year till final year B. Tech students. A provision of Flexi courses, which can be designed just before the start of the semester based on the current technological demand is made available.
- Curriculum is revised as per requirements and needs.
- The alumni representative is a member of Quality Improvement cell (QIC) the suggestions received from alumni are invited and incorporated as required in the curriculum.
- To identify and invite industry experts to deliver content beyond syllabus and make students aware of contemporary issues and engineering practices adopted in the industry
- To provide industry exposure to students through internships in industry, industry visits and enable them to pick up skills besides what is being imparted in the classrooms. In autonomous structure students are allowed to undergo semester wide internship program industry-sponsored final year projects
- Service Learning: The institute believes that we have a responsibility towards society hence Service Learning is a mandatory subject for the students, so that the students can become responsible towards society, environment, global issues, etc. and develop into responsible citizens. The Symbiosis International (Deemed University) SIU launched the Symbiosis Community Outreach Programme and Extension (SCOPE) on 2nd July 2012 with the objective of positively impacting the community around SIU as a part of its health promoting initiatives. SCOPE through its twin arms of healthcare and non-health initiatives is working towards a sustainable, comprehensive and integrated development of the 22 identified villages located in the vicinity of main campus of SIU at Mulshi taluka of Pune district. The objective is to equip the community to identify, and promote its own health initiatives, by taking proactive, community driven sustainable socio-economic and environmental efforts. SIU is committed

SYMBIOSIS INSTITUTE OF TECHNOLOGY, MOUJE – WATHODA

Mandatory Disclosure Appendix 10

to the principles of — ‘Health for All’ and sustainable development. This is an asset to the university staff, students, and to the communities in which they are located and to the wider society where these students will eventually assume professional roles.

- Membership of different professional bodies has been taken for students which can help the students to grow beyond classrooms.
- Training & Placement Cell also fosters relations with the industries as a part of the placement drive. In order to understand industry needs the cell hosts an HR meet every year. The meet involves lectures/interactions with eminent industrialists, panel discussions between students, faculty and industry experts which gives valuable insights of the placements scenario and recent developments at local and global levels that serve as an input for identifying training needs of our students in order to make them employable.
- Training is provided to each student regarding Certificate in Covid-19 Care for community by SUHRC.
- Sport facility/students affairs/improvements Students are motivated for the participation in different curricular/ co-curricular and extracurricular activities.
- Health check-ups and medical facilities are available for all the students.
- Different events; tech fest, reverb, hackathon, literary club, departmental club, student’s chapters are carried out throughout a year.

Mechanism/Norms and Procedure for democratic/good governance:

The management recognizes the need for decentralization for the growth of the institute and accords autonomy commensurate with the level of management. Dean, Director, Deputy Director Academics, Deputy Director Administration, Heads of the department, Examination head, In-charge Internationalization, In-charge Industry Connect, Placement Officer, in-charge Quality Assurance Cell, Librarian, Administrative officer, In-charge Mentoring Cell are appointed for efficient governance. The roles and responsibilities of administrator’s/decision makers for various assigned jobs listed below clearly depict the delegation of authority, providing operational autonomy leading to a decentralized governance system.

- Dean, to initiate research activities, new programmes, monitoring the overall progress of the institute
- Director, to implement and monitor the education system to cater to the institute’s vision and mission.
- Deputy Director Academics, is responsible for academic development, curriculum structure design for all courses and monitor progress of various teaching/learning processes. To organize different academic meetings every semester.
- Deputy Director Administration, is to monitor all administrative and operational functions in the institute
- Head of the department, is responsible for the academic and administrative functions of the department.
- In-charge Quality Assurance cell, is responsible for preparing towards different accreditations like NBA and NAAC and comply with various ranking agencies such as NIRF, OMPI etc.
- Examination Head, is responsible for planning and conduction of all internal / end semester examination, coordination and generation of result.
- In-charge Internationalization, is responsible for international exposure to the institute.
- In-charge Mentoring Cell, is responsible for counselling and monitoring the progress of the students, communicating the same to their parents.
- Administrative Officer, is responsible for all administrative activities, finance, annual budget, admissions, social gathering of students.
- In-charge Industry connect, is responsible to connect with Industries in and around Pune for semester wide internships, sponsored projects, providing industry experts in different academic activities and forming and implementing MOU’s.
- Placement officer, is responsible for placement of the students.
- Librarian, is responsible for maintaining the library resources, making offline/ online books/ journals/ articles available for faculty and students.

- At the department level:
 - Each program has Coordinator for undergraduate and post-graduate programs.
 - Based on the institute calendar proposed by Deputy Director Academics, the department calendar is prepared for planning and organizing of various activities in the department
 - Each course has a course coordinator who, in consultation with the faculty teaching the subject, sets course objectives, prepares the teaching plan for the semester, conducts meetings with faculty regularly to monitor and review course completion and attainment of course outcomes.
 - Class teachers/batch mentor are designated for all classes/batches Students.

Feedback on Institutional Governance/Faculty Performance:

1. Feedback on curriculum from all the stakeholders; Alumni, students, industry, parents and faculty is collected every year and the analysis is used in development of curricula for the next academic year.
2. Feedback about Faculty is taken from students twice a semester.
3. The various parameters on which teaching is assessed are Communication Skills, Quality of Teaching/ Academic input, Subject Knowledge, Content and Method of Delivery, Resourcefulness, Readiness of teacher, Accessibility and Availability of Teacher in Campus/ Department. Based on the analysis of it, the counselling of the faculty having feedback less than 3.5(out of 5) is carried out and the appreciation letter to faculty having feedback more than 4.5 is given.
4. An Institute Level Parent Teacher meeting is conducted once every semester. During the meeting, parents are made aware about their wards' attendance, academic performance for the semester as well as about the various learning processes conducted in the institute. During the pandemic situation the Parent-teacher meeting was conducted online and the response to the meet was overwhelming.
5. Feedback about Institute is also taken from all students once in a year. This includes the feedback about the facilities and the infrastructure of the institute. In year 2021-22 the classes were conducted online and the feedback was modified accordingly.
6. Various companies will visit the campus of the institute for the placement of the students. Based on this feedback, Guest lectures, workshops, seminars are organized for students to help them to be ready for industry.
7. Internal Continuous Evaluation System and place: Examination Scheme (ES) The Examination Scheme shall be based on a yearly bi-semester pattern for both UG and PG Programs. Course contents(syllabi), for the courses, are as recommended by the Board of Subjects (BoS) and approved by the Academic Council (AC) and by Board of Management (BoM). The structure and courses taught for UG are as detailed in the relevant section, in this manual, on Academic Rules and Regulations. The same can also be accessed on the college website (www.sitnagpur.edu.in).
8. Assessment of Academic Performance for both UG program the evaluation of a candidate, for the academic performance in a course, shall be based on the performance in continuous assessment (CA), and End Semester examinations (ESE).
9. Continuous Assessment (CA): This is conducted by the course teacher throughout the semester and shall include evaluation of laboratory work, assignments, problem solving, group discussion, quiz, seminar, mini-project and other academic tools of evaluation. The course teacher shall announce the detailed methodology, for conducting the various component of CA together with their weightages, in the beginning of the semester.
10. End Semester Examination (ESE): It is conducted at the end of semester, being subjective but this year it was conducted in online mode due to pandemic using Microsoft Team and google classroom. Monitoring of Evaluation CA shall be conducted by the course teacher and monitored by the Head of department. ESE shall be conducted by the Examination Section and monitored by Examination head.
11. Rules of Passing: The minimum passing percentage in each course (Theory, CA, Practical/ seminar/ project/ internship) is 40% (grade P) To earn credits for a course
12. (Theory/practical/oral/seminar/project/internship), the candidate must pass the course with minimum passing marks/grade ($\geq 40\%$ / $> F$ Grade)

Student feedback mechanism on Institutional Governance/faculty performance

- **Feedback at SIT:**
 - Feedback is an integral part of academics at Symbiosis Institute of Technology (SIT) and is conducted each semester for each and every course using the LMS Module, an online module for conducting all types of feedback and designed specifically for all institutes affiliated with Symbiosis International (Deemed University). Feedback aids in the improvement of the teaching-learning process and benefits both students and faculty in various ways.
 - Curriculum feedback is collected every semester and analysed separately from various stakeholders such as students, alumni, industry experts, parents, and faculty. The only exception is the Student Satisfaction Survey, which is conducted once a year at the end of the even semester
- **Students Response to feedback:**
 - Students enables to enter the feedback once it is activated successfully in LMS portal.
 - The students enter the feedback in LMS with their Login ID and Password. The feedback is enable through mobile, Laptop, or desktop. The feedback can be entered any time during the time for which it is active.
 - The LMS provides a list of students who have submitted feedback and a list of remaining students. The remaining students are sent reminder through email to submit the feedback in scheduled time.
 - The Feedback process is confidential and executed with the control of Deputy Director Academics and the Director of the institute. The feedback coordinator is assigned to monitor and regulate the feedback.

Grievance redressal mechanism for faculty, staff and students

1. The Grievance Committee has been formed as per the guidelines of the SIU and it deals with the grievances of the teachers and other staff. Faculty and staff members can approach Head of Department and Director for redressal of any grievance. Suggestion boxes are checked on a weekly basis and action taken reports are notified to the students, even to anonymous suggestions/complaints.
2. Students, in case of any problem with teaching can contact their head of department. They can also report the matter to the Director. The action is taken in stipulated time frame.
3. In addition, various committees of students have been formed. Mess committee meets the Admin Officer and Director regularly. There is a student consultation committee. Meeting is held regularly. Action is taken on the points raised by the students and reported in the next meeting.
4. Generally, faculty feels comfortable to talk about the indifferences to mentors/Heads of Departments or Director. The actions are immediate in consultation with all concerned since the policies have been properly laid down, conflicts are totally avoided.

SYMBIOSIS INSTITUTE OF TECHNOLOGY, MOUJE – WATHODA**Mandatory Disclosure Appendix 10****Establishment of Anti-Ragging Committee**

Post	Name	Representative
Director/ Head of the Constituent Institute/ Department from the Campus/ Location nominated by the Vice Chancellor	Dr. Shailesh Rastogi, Director, Symbiosis Institute of Business Management (SIBM), Nagpur	Chairperson
One Representative of Civil Administration from the City/ Town where the campus/ location is situated	Mr. Milind Meshram, Deputy Municipal Commissioner, NMC. Nagpur	Member
One Representative of a nearby Police Station	Mr. Sagar Avhad, API, Sakkardara Police Station, Nagpur	Member
One Representative of Local Media	Mr. Vaibhav Ganjapure, Assistant. Editor, Times of India, Nagpur	Member
One Representative of a Non-Government Organization (NGO) involved in youth activities	Mr. Anand Fiske, Director, Green Planet Social Foundation	Member
Two Deputy Directors/ Professors/ Associate Professors from the campus/ location, out of which one shall be a woman, nominated by the Vice Chancellor	Dr. Purva Mange, Associate Professor, (SSPAD), Nagpur Mr. Sachin Tripathi, Asst. Professor, Symbiosis Law (S) Nagpur	Member
Two Representatives of parents of students from the Constituent Institute/ Department from the campus/ location nominated by the Head-Student Affairs	Mr. Santosh Sharma Dr. G. T. Kedar	Member
A representative of the fresher students from the Constituent Institute/ Department from the campus/ location nominated by the Head-Student Affairs	Mr. Nabh Gautam, SIBM, Nagpur (Programme: M.B.A., PRN: 23021241092	Member
A representative of the senior students from the Constituent Institute/ Department from the campus/ location nominated by the Head-Student Affairs	Mr. Chintamani Chaudhari, SIT, Nagpur, (Programme B. Tech. (Computer Science and Engineering), PRN: 22070521138)	Member
A Non-Teaching staff, not below the rank of Campus Administrator, nominated by Dean-Academics and Administration, Symbiosis	The Campus Administrator, Off Campus Centre, Nagpur	Member Secretary

Establishment of Grievance Redressal Committee

Post	Name	Representative
A Professor to be nominated by the Vice Chancellor	Dr. Nandini Kulkarni, Professor and Officiating Director, SSPAD, Nagpur	Chairperson
Four Professors/ Senior Faculties from amongst Constituents on the campus, by rotation, to be nominated by the Vice Chancellor Members	Dr. Hari Babu Singu, Associate Professor, SIBM, Nagpur Dr. Zericho Marak, Assistant Professor, SCMS, Nagpur Dr. Aarti Kalnawat, Assistant Professor, SLS, Nagpur Dr. Deepti Khubalkar, Assistant Professor, SLS, Nagpur	Members
A representative from among students of the Constituents in the campus, by rotation, to be nominated by the Vice Chancellor based on academic merit/ excellence in sports/ performance in co- curricular activities	Mr. Shrirang Gouri Vijay, SCMS, Nagpur (Programme: B.B.A, PRN: 23021322042)	Special invitee

Appointment of Ombudsman by the University

University has appointed Dr. Bhaskar Shejwal as the Ombudsman.

If the aggrieved student is not satisfied with the decision of the Grievance Redressal Committee of the Institute, he/she may appeal to the Ombudsman by registering a grievance with the Administrative Officer of the Institute.

Contact Details:

Dr. Bhaskar Shejwal

ombudsman@siu.edu.in

9850574476

SYMBIOSIS INSTITUTE OF TECHNOLOGY, MOUJE – WATHODA

Mandatory Disclosure Appendix 10

Establishment of Internal Committee Cell (ICC)

Post	Name	Representative
Presiding Officer, shall be a female faculty member not below the rank of Professor nominated by the Vice Chancellor	Dr. Purva Mange, Associate Professor, (SSPAD), Nagpur	Chairperson
Two faculty members and two non-teaching employees preferably committed to the cause of women, or who have had experience in social work, or have legal knowledge, nominated by the Vice Chancellor	Dr. Shilpa Sharma, Assistant Professor, SLS, Nagpur Dr. Nilesh Bahadure, Associate Professor, SIT, Nagpur Mr. Parag Shirbhate, Sr. Coordinator, SCMS, Nagpur Ms. Lucky Chandekar, Officer, SLS, Nagpur	Members
Three students, if the matter involves student(s), enrolled at the undergraduate/ postgraduate level/ research level, nominated by the Vice Chancellor	Ms. Vats Yashasvi Gyan Prakash, SLS, Nagpur Ms. Aheli De, SIBM, Nagpur Mr. Chaitanya Anil Chavan, SCMS, Nagpur	Members
One member from amongst non-government organizations or associations committed to the cause of women or a person familiar with the issues relating to sexual harassment, nominated by the Vice Chancellor	Adv. Mrs. Shalini Saxsena, President, Aishwarya Bahuudeshiya Sanstha (NGO)	Member
Head-Student Welfare/ University Representative nominated by the Vice Chancellor	Head-Student Welfare	Member Secretary

Establishment of Committee for SC/ST

Post	Name	Representative
The Vice Chancellor of the University	Dr. Ramakrishnan Raman, Vice Chancellor, SIU	Chairperson
Three Directors of Constituent	Dr. Sanjeevani Ayachit, Director, SID Dr. Chandrashekhar Rawandale, Director, SLS, NOIDA Dr. Madhvi Sethi, Director, SIBM, Bengaluru	Members
Two faculty members (Asst. Professor at least)	Mr. Nitin Gawai, Assistant Professor, SID Ms. Deepika Kumari, Assistant Professor, SICSR	Members
Liaison Officer of the SC/ ST Cell	Dr. Nitin R. Mahankale, Associate Professor, SCMS, Pune	Member
Coordinator of SC/ ST Cell	Head —Student Welfare, SIU	Member Secretary

SYMBIOSIS INSTITUTE OF TECHNOLOGY, MOUJE – WATHODA**Mandatory Disclosure Appendix 10****Establishment of University-Industry Cell**

Name	Designation	Representative
Dr. Ketan Kotecha	Dean, Faculty of Engineering, SIU	Chairperson
Brig. (Dr.) Rajiv Divekar (Retd)	Dean, Faculty of Management, SIU	Member
Dr. Sanjeevani Ayachit	Dean, Faculty of Architecture and Design, SIU	Member
Dr. M. S. Shejul	Registrar, SIU	Member
Mr. J. R. Pathare	Chief- Human Resource, Symbiosis	Member
The Head, Student Welfare	SIU	Member
Dr. Nilesh Kumbhojkar	Director, Symbiosis Centre for Alumni Engagement (SCAE)	Member Secretary

Establishment of Internal Quality Assurance Cell (SIT, Nagpur)

Post	Name	Representative
Director of the Constituent	Dr. Nitin Rakesh	Chairperson
QIC Coordinator to be nominated by the Director	Dr. Poorva Agrawal	Member Secretary
External academician / researcher of repute to be nominated by the Director	Dr. Shital Raut	Member
Two Professor to be nominated by the Director	Dr. Jagdish Chandra Patni	Member
Three Associate Professor to be nominated by the Director	Dr. Nilesh Bahadure Dr. Latika Pinjarkar Dr. Sudhanshu Maurya	Member
Three Assistant Professor to be nominated by the Director	Dr. Sagarkumar Badhiye Dr. Purushottam Shobhane Dr. Pradnya Borkar	Member
Administrative Officer	Mr. Santosh Shukla	Member
Information Officer	Mr. Riddheshwar Bilawane	Member
Supervisor	Mr. Ashish Bawankar	Member
Two Student Representative to be nominated by the Director	Ms. Shafaq Ms. Renuka	Member

SYMBIOSIS INSTITUTE OF TECHNOLOGY, MOUJE – WATHODA**Mandatory Disclosure Appendix 10****Internal Quality Assurance Cell (SIU)**

Post	Name	Representative
Chairperson: Head of the Institution	Dr. Ramakrishnan Raman	Vice Chancellor
Teacher to represent All Level	Dr. Poornima Tapas Dr. Anirban Sur Ms. Sheetal Barde Dr. Manjari Jonnalagadda Ms. Lasya Vyakaraman	Professor Professor Associate ProfessorAssistant ProfessorAssistant Professor
One Member from the Management	Prof. Vinayak Shirgurkar	Management Consultant
Few Senior Administrative Officers	Dr. Asmita Dani Dr. Anita Patankar Dr. Avinash Kakade Dr. Sophia Gaikwad Mr. Harshad Gune Dr. Dharmendra PandeyCA Supriya Deshpande	Director, Academics Director, SCIE Deputy Registrar Head, STLRC Software Development Head, Quality Assurance Deputy Finance Officer
One Nominee each from Local Society, Students and Alumni	Mr. Pradeep Bhargava Ms. Kritika Mehrotra Ms. Kanisha Raina	Member from Local Society Member from StudentsMember from Alumni
One Nominee each from Employers, Industrialist /Stakeholders	Mr. Jivesh Govil Mr. Jaysurya Das Mr. Nilesh Nikam	Member from Employers Member from Industrialist Member from Stakeholders
One of the Senior Teachers as the Coordinator/ Director of the IQAC	Dr. Hardik Vachharajani	Professor & Director, Quality Management and Benchmarking

6. Programmes

Name of the Programmes approved by AICTE: Engineering and Technology

Allotted seats for B. Tech (4 years' full time)

Programme	Intake
B. Tech. (Computer Science and Engineering)	240

Name of the Programmes Accredited by NBA: Not Applicable

Status of Accreditation of the Courses: Not Applicable

No. of Courses for which applied for Accreditation: Not Applicable

7. Faculty

Sr. No.	Name of Faculty	Designation	Branch
1	Dr. Nitin Rakesh	Director & Professor	Computer Science and Engineering
2	Dr. Jagdish Chandra Patni	Professor	
3	Dr. Nilesh Bahadure	Associate Professor	
4	Dr. Latika Pinjarkar		
5	Dr. Sudhanshu Maurya		
6	Dr. Shyam Pratap Singh		
7	Dr. Sagarkumar S. Badhiye	Assistant Professor	
8	Dr. Poorva Agrawal		
9	Dr. Pradnya Borkar		
10	Dr. Gagandeep Kaur		
11	Dr. Nilesh Shelke		
12	Dr. Heranmoy Maity		
13	Dr. Pratik Agrawal		
14	Ms. Monali Gulhane		
15	Mr. Rajeshwar Balla		
16	Dr. Ramdas Khomane	Assistant Professor	Basic Science and Humanities
17	Dr. Purrushottam Shobhane		
18	Ms. Sneha Varghese		
19	Dr. Gopal Kumar Gupta		
20	Dr. Pramod K Pandey		

8. Profile of Director/Faculty

Computer Science and Engineering



Prof. (Dr.) Nitin Rakesh

Director and Professor

Doctor of Philosophy (Computer Science & Engineering)
 Master of Technology (Computer Science & Engineering)
 Bachelor of Technology (Information Technology)

Email: director@sitnagpur.siu.edu.in
 Mob. No.: +917042936789

Research Interests & Expertise:

Broad areas:

- Network
- Parallel Computing
- Vehicular
- Data Compression

Specific areas:

- Network Coding
- Online Phantom Transactions
- Interconnection Networks & Architecture
- Underwater Sensor Network,
- Game Theory, Parallel Computing,
- AI/ML, VANET

Awards:

1. IBM Drona Award
2. Top 10 State Awards
3. Best Paper Awards

Profiles:



Total work Experience : 20+ Years
Research Papers : 180+ (Indexed in SCI/SCIE/SCOPUS)
Patents : 90+ (Granted + Published)
Conference Chair : 10 International Conference
Consultancy : 8 (Industry, Institution, Research Centers)
Product Development : 5
Books : 3
Membership : Senior Member IEEE, Member ACM USA,
 Life Member Computer Society of India (CSI)



Dr. Nilesh Bhaskarrao Bahadure

Associate Professor

Ph.D. in Electronics Engineering (KIIT Deemed to be University, BBSR)

M.E. in Digital Electronics (SGB Amravati University)

B.E. in Electronics Engineering (RTM Nagpur University)

Email: nilesh.bahadure@sitnagpur.siu.edu.in

Mob. No.: +91-9309182810

Research Interests & Expertise:

Broad areas:

- Internet of Things
- Machine Learning
- Image Processing
- Signal Processing
- Digital Systems

Specific areas:

- Biomedical Image Processing
- Internet of Things
- Image and Signal Processing

Profiles:

[\[Personal Website\]](#)

[\[SCOPUS\]](#)

[\[LinkedIn\]](#)

[\[Google Scholar\]](#)

[\[Research Gate\]](#)

[\[ORCID\]](#)

[\[Web of Science ID\]](#)

[\[Vidwan ID\]](#)

Total work Experience : 22 Years
Research Papers : 15 (Indexed in SCI/SCIE/ESCI/SCOPUS)
Patents : 02 (Copyrights)
Books : 13 (PHI, IK International, Pearson, BPB)



Dr. Latika Pinjarkar

Associate Professor, CSE

Ph.D. CSE, CSVTU, Bhilai (CG, India)

M.E. CTA, CSVTU, Bhilai (CG, India)

Email: latika.pinjarkar@sitnagpur.siu.edu.in

Mob. No.: +91-9993234606

Research Interests & Expertise:

Broad areas:

- Artificial Intelligence
- Image Processing

Specific areas:

- Machine Learning
- Deep Learning
- Computer Vision

Profiles:

[\[Scopus\]](#)

[\[Web of Science\]](#)

[\[Google Scholar\]](#)

[\[LinkedIn\]](#)

Total work Experience : 23 years
Research Papers : 10 (Indexed in SCI/SCIE/ESCI or SCOPUS)
Funded Project : 1
Patents : 4 National 2 International



Dr. Sudhanshu Maurya

Associate Professor CSE

Visiting Post-Doctoral Researcher, University of Luxembourg

Post-Doctoral Research, University of Malaysia Perlis, Malaysia

Ph.D. Computer Science (Cloud Computing)

M. Tech Computer Science & Engineering, HNB Garhwal Central University, Uttarakhand.

Email: sudhanshu.maurya@sitnagpur.siu.edu.in

Mob. No.: +91-7717782567

Research Interests & Expertise:

Broad areas:

- Artificial Intelligence
- Cloud Computing
- Internet of Things
- Blockchain

Specific areas:

- Security & Privacy Aspects
- Energy Efficiency of IoT Devices
- Optimization
- Cyber Security on UAVs
- Fog & Edge Computing

Profiles:

[\[Personal Website\]](#)

[\[SCOPUS\]](#)

[\[LinkedIn\]](#)

[\[Google Scholar\]](#)

[\[Research Gate\]](#)

[\[ORCID\]](#)

[\[Web of Science ID\]](#)

[\[Vidwan ID\]](#)

Total work Experience	: 10+ years
Research Papers	: 90+ (Indexed in SCI/SCIE/ESCI or SCOPUS)
Patents	: 11 National 03 International (Granted)
Books	: 05
Awards	: 03
Membership	: Senior Member IEEE, Professional Member ACM USA, Member Computer Society of India (CSI)



Dr. Shyam Pratap Singh

Associate Professor

Ph.D. in Wireless Communication (BIT, Mesra, Ranchi)

M.E. in ECE (Thapar Institute of Engineering & Technology, Deemed to be University)

B.E. in E & Tc. (RGPV, Bhopal)

Email: shyam.singh@sitnagpur.siu.edu.in

Mob. No.: +91-7503059306

Research Interests & Expertise:

Broad areas:

- Nano & Molecular Communications
- Wireless Communication
- Wireless Sensor Network
- Internet of Things
- Deep Learning
- Digital Signal Processing
- Antenna Theory
- EM Wave Theory

Specific areas:

- Disease Detection and Therapy using Nano & Molecular Communication based Approaches.
- Developing AI Enabled Devices for Versatile Applications.
- Modelling & Mitigation of Impairments in Nano & Molecular Communication.

Profiles:

[\[SCOPUS\]](#)

[\[LinkedIn\]](#)

[\[Google Scholar\]](#)

[\[Research Gate\]](#)

[\[ORCID\]](#)

[\[Web of Science ID\]](#)

Total work Experience : 21 Years
Research Papers : 55 (Indexed in SCI/SCIE/ESCI/SCOPUS)
Patents : 02 (IPR)



Dr. Sagarkumar Shridhar Badhiye

Assistant Professor (Sr. Grade)

Ph.D. in Computer Science and Engineering (GCOEA, SGBAU)

M. Tech. in Computer Science and Engineering (GCOE, Amravati)

B. E. in Information Technology (RTM Nagpur University)

Email: sagarkumar.badhiye@sitnagpur.siu.edu.in

Mob. No.: +91-8669024256

Research Interests & Expertise:

Broad areas:

- Machine Learning
- Image Processing
- Natural Language Processing
- Data Analytics

Specific areas:

- Time Series Analytics
- Medical Image Processing
- Semantic Analysis

Profiles:

[\[Vidwan\]](#)
[\[LinkedIn\]](#)
[\[Google Scholar\]](#)
[\[Web of Science\]](#)
[\[Scopus\]](#)
[\[You Tube\]](#)

Total work Experience : 14 Years
Research Papers : 11 (Indexed in SCI/SCIE/ESCI/SCOPUS)
Patents : 02 (Patents), 01 (Copyright), 01 (Design)
Books : 01 (Lambert Academic Publishing)



Dr. Poorva Agrawal

Assistant Professor (Senior Grade), CSE

Ph.D. CSE, Symbiosis International (Deemed University), Pune

M.E CSE, SGSITS, Indore

Email: poorva.agrawal@sitnagpur.siu.edu.in

Mob. No.: +91-9404583780

Research Interests & Expertise:

Broad areas:

- Artificial Intelligence
- Soft Computing

Specific areas:

- Machine Learning
- Deep Learning
- Image Processing
- Computer Vision

Profiles:

[\[Scopus\]](#)

[\[LinkedIn\]](#)

[\[Google Scholar\]](#)

[\[Web of Science\]](#)

Total work Experience : 13 years
Research Papers : 14 (Indexed in SCI/SCIE/ESCI or SCOPUS)
Patents : 1 National



Dr. Pradnya Borkar

Assistant Professor(CSE)

Ph. D.(Computer Science and Engineering)

M.Tech.(Computer Science and Engineering)

B.E.(Computer Technology)

Email: pradnya.borkar@sitnagpur.siu.edu.in

Mob. No.: +91-9834035712

Research Interests & Expertise:

Broad areas:

- High Performance Computing
- Bioinformatics

Specific areas:

- Parallel Computing
- RNA Secondary Structure Prediction

Profiles:

[\[SCOPUS\]](#)

[\[LinkedIn\]](#)

[\[Google Scholar\]](#)

[\[Research Gate\]](#)

[\[ORCID\]](#)

[\[Web of Science ID\]](#)

[\[Vidwan ID\]](#)

Total work Experience : 20
Research Papers : 23 (Indexed in SCI/SCIE/ESCI/SCOPUS)
Patents : 01(Granted)(03 Published)
Books : 03(Authored) 2(Edited)



Dr. Gagandeep Kaur

Assistant Professor (CSE)

PhD (Computer Science and Engineering),
M.Tech (Computer Science and Engineering),
B.Tech (Computer Science and Engineering),

Email: gagandeep.kaur@sitnagpur.siu.edu.in

Contact: 07030838388

Research Interests & Expertise:

Broad areas:

- Computer Science & Engineering
- Information Technology
- Artificial Intelligence
- Data Science

Specific areas:

- Natural Language Processing
- Image Processing
- Machine Learning
- Deep Learning
- Game Theory

Profiles:

[\[SCOPUS\]](#)
[\[LinkedIn\]](#)
[\[Google Scholar\]](#)
[\[Research Gate\]](#)
[\[ORCID\]](#)
[\[Web of Science ID\]](#)
[\[Vidwan ID\]](#)

Total work Experience : 12 years

Research Papers : 17 (Indexed in SCI/SCIE/ESCI or SCOPUS)

Patents : 01 National (Filed)



Dr. Nilesh Shelke

Assistant Professor (CSE)

Ph. D. CSE from Amravati University

M. Tech. (CSE) from RTM Nagpur University

MCA from Amravati University

Email: nilesh.shelke@sitnagpur.siu.edu.in

Mob. No.: +91-9890383745

Research Interests & Expertise:

Broad areas:

- Image Processing
- Artificial Intelligence

Specific areas:

- Natural Language Processing
- Machine Learning
- Deep Learning
- Data Mining

Profiles:

[\[SCOPUS\]](#)

[\[LinkedIn\]](#)

[\[Google Scholar\]](#)

[\[ORCID\]](#)

[\[Web of Science ID\]](#)

[\[Vidwan ID\]](#)

Total work Experience : 24
Research Papers : 20 (Indexed in SCI/SCIE/ESCI or SCOPUS)
Patents : 03



Dr. Heranmoy Maity

Assistant Professor, CSE

Ph.D. in (Tech)

M.Tech in Electronics & Communication Engineering

B.E in Electronics & Communication Engineering

Email: pratik.agrawal@sitnagpur.siu.edu.in

Mob. No.: +91- 9096825752

Research Interests & Expertise:

Broad areas:

- Quantum Computing
- Internet of Things
- Image Processing
- Signal Processing

Specific areas:

- Quantum Computing
- Internet of Things
- Image and Signal Processing

Profiles:

[\[Scopus\]](#)
[\[Vidwan\]](#)
[\[LinkedIn\]](#)
[\[Google Scholar\]](#)
[\[Web of Science\]](#)

Total work Experience : 15 years
Research Papers : 18 (Indexed in SCI/SCIE/ESCI or SCOPUS)
Patents : 03 Indian, 03 International



Dr. Pratik K Agrawal

Assistant Professor, CSE

Ph.D in Computer Science & Engineering(2019)

M.Tech in Computer Science & Engineering (2013)

B.E in Information Technology (2011)

Email: pratik.agrawal@sitnagpur.siu.edu.in

Mob. No.: +91- 9096825752

Research Interests & Expertise:

Broad areas:

- Artificial Intelligence
- Cloud Computing
- Databases
- Blockchain

Specific areas:

- Human Language Processing
- Resource Mgmt in Cloud
- Parallel Processing
- Security in NLP

Profiles:

[\[SCOPUS\]](#)

[\[LinkedIn\]](#)

[\[Google Scholar\]](#)

[\[ORCID\]](#)

[\[Web of Science ID\]](#)

Total work Experience : 12 years
Research Papers : 08 (Indexed in SCI/SCIE/ESCI or SCOPUS)
Patents : 02 Granted 02 Published



Prof. Monali Gulhane

Assistant Professor, CSE

Ph.D. Computer Science, (AI&ML)

M. Tech Computer Science & Engineering, RTMNU.

B. Tech Computer Science & Engineering, SGBAU

Email: monali.gulhane@sitnagpur.siu.edu.in

Mob. No.: +91-9766709211/9075089800

Research Interests & Expertise:

Broad areas:

- Artificial Intelligence
- Machine Learning
- Internet of Things

Specific areas:

- Deep Learning Image Recognition
- Diseases Prediction
- Security aspects image recognition
- Voice Recognition

Profiles:

[\[SCOPUS\]](#)

[\[LinkedIn\]](#)

[\[Google Scholar\]](#)

[\[Research Gate\]](#)

[\[ORCID\]](#)

[\[Web of Science ID\]](#)

[\[Vidwan ID\]](#)

Total work Experience : 10.5
Research Papers : 14 (Indexed in SCI/SCIE/ESCI/SCOPUS)
Patents : 1 published 3 granted
Books : 1



Prof. Rajeshwar L. Balla

Assistant Professor, CSE

M.Tech in Computer Science & Engineering (2013)

M.Phil in Computer Science & Engineering (2009)

M.Sc in Computer Science & Engineering (2003)

Email: rajeshwar.balla@sitnagpur.siu.edu.in

Mob. No.: 9421878999,9420878999

Research Interests & Expertise:

Broad areas:

- Information Centric Network
- Cloud Computing

Specific areas:

- Computer Network

Profiles:

[\[LinkedIn\]](#)

[\[Google Scholar\]](#)

[\[ORCID\]](#)

Total work Experience : 25 years

Books : 2 Book Chapter

Basic Science and Humanities

Dr. Ramdas Bhagvan Khomane

Assistant Professor (Sr. Scale)

Post-Doctoral Research National University of Singapore

Ph.D. Chemistry: Nanomaterials (CSIR-NCL, Pune)

M.Sc. Organic Chemistry (SPPU Pune)

B.Sc. Chemistry (SPPU Pune)

Email: ramdas.khomane@sitnagpur.siu.edu.in

Mob. No.: +91-9511768340



Research Interests & Expertise:

Broad areas:

- Nanoscience & Nanotechnology
- Membrane Technology

Specific areas:

- Green synthesis of nanomaterials
- Nanomaterial functionalized membranes
- Nanofluids
- Nanomaterials applications in lithium-ion batteries, nano catalysis, membrane-based selective separations, etc.

Profiles:

[\[SCOPUS\]](#)

[\[LinkedIn\]](#)

[\[Google Scholar\]](#)

[\[Research Gate\]](#)

[\[ORCID\]](#)

[\[Web of Science ID\]](#)

[\[Vidwan ID\]](#)

Total work Experience : 24 Years
Research Papers : 24 (Indexed in SCI/SCIE/ESCI/SCOPUS)
Patents : 1 International (US Patent), 3 National



Dr. Purushottam D. Shobhane

Assistant Professor (Mathematics)

Ph.D. (Mathematics) from Gondwana University,
Gadchiroli M.Sc. (Mathematics) from Nagpur University,
Nagpur

B.Sc. (Mathematics) from Amravati University, Amravati

Research Interests & Expertise:

Broad areas:

- Relativity
- Mathematical Modeling

Specific areas:

- General Theory of Relativity
- Cosmology

Profiles:

[\[Google Scholar\]](#)

[\[Scopus\]](#)

[\[WoS\]](#)

[\[Linked-In\]](#)

Total work Experience : 32 Years
Research Papers : 02 (Indexed in SCI/SCIE/ESCI/SCOPUS)
Books : 04



Prof. Sneha Thomas

Assistant Professor and Lab in charge- Tinker

MA, PhD (pursuing), UGC- NET, SET

Email: sneha.thomas@sitnagpur.edu.in

Contact: 8390829889

Research Interests & Expertise:

Broad areas:

- Gender Studies
- Discourse and Cultural Studies
- English Literature and linguistics

Specific areas:

- African American Studies
- Masculinity and feminist studies
- Ethnography and auto ethnographic studies
- Digital humanities
- Comp Linguistics

Research Profiles:

[\[Google Scholar\]](#)

[\[ORCID\]](#)

Total work Experience

: 05 years



Dr. Gopal Kumar Gupta

Assis. Professor Math

Ph.D. Math (IIT BHU)

Operation research (Queuing Theory)

M. Sc. Math (BHU).

Email: gopalkumar.gupta@sitnagpur.siu.edu.in

Mob. No.: +91-8726571467

Research Interests & Expertise:

Broad areas:

- Operation Research
- Applied Mathematics

Specific areas:

- Stochastic Process
- Optimization
- Queuing Theory

Profiles:

[\[Personal Website\]](#)

[\[SCOPUS\]](#)

[\[LinkedIn\]](#)

[\[Google Scholar\]](#)

Total work Experience

: 04 years

Research and Conference Papers

: 10 (Indexed in SCI/SCIE/ESCI/SCOPUS)



Dr. Pramod Kumar Pandey

Assistant professor

Marie Curie Fellow

PhD (Physics) IIT Kanpur

M.Tech IIT Kanpur

Email: pramod.pandey@gmail.com

Mob. No.: +91-9935864483

Research Interests & Expertise:

Broad areas:

- Study of Laser Matter Interaction
- Laser Plasma diagnostic.
- VIS/UV, X-ray imaging and spectroscopy.
- Design and development of Ophthalmic instruments like OCT, CXL etc.
- Design of intraocular lenses.

Specific areas:

- Study of metallic nanoparticles/nanocomposite formation using laser-induced colliding plasma.
- Laser Wakefield accelerator (LWFA) for energized particles for further applications.
- Design of optical setup/ instruments for several specific applications.

Profiles:

[\[SCOPUS\]](#)

[\[LinkedIn\]](#)

[\[Google Scholar\]](#)

[\[Research Gate\]](#)

[\[ORCID\]](#)

[\[Web of Science ID\]](#)

[\[Vidwan ID\]](#)

Total work Experience : 10 years

Research Papers : 13 (Indexed in SCI/SCIE/ESCI/SCOPUS)

9. Fees

<https://sitnagpur.edu.in/first-year-fees-structure>

10. Admission B. Tech 2023-24

Year	Intake	Admissions	Male	Female	DQ	Nagpur Quota				General			
						Open	SC	ST	DA*	Open	SC	ST	DA*
2023-24	180	204	131	73	02	31	05	00	00	154	12	00	00

*Differently Abled

11. Admission Procedure

- Mention the admission test being followed, name and address of the Test Agency/State Admission Authorities and its URL (website)
 1. **SIT Engineering Entrance Exam (SITEEE)**
<https://www.set-test.org>
 2. (JEE/ Any State Exam)
[Joint Entrance Examination \(Main\) | India \(nta.nic.in\)](http://Joint Entrance Examination (Main) | India (nta.nic.in))
 3. Any State Government Engineering Entrance Examination (ASGEEE) 2024
- A number of seats allotted to different Test Qualified candidates separately (AIEEE/ CET (State conducted test/ University tests/ CMAT/ GPAT)/ Association conducted test etc.) NA
- **Calendar for admission against management/vacant seats: NA**
 - Last date of the request for applications: 30th Oct 2024
 - Last date of submission of applications: 30th Oct 2024
 - Dates for announcing final results: 22nd May 2024 onwards
 - Release of admission list (main list and waiting list shall be announced on the same 29th May 2024 onwards
 - Date for acceptance by the candidate 5 days after the declaration result
 - Last date for closing of admission: 30th Oct 2024
 - Starting of the Academic session: 1st Aug 2024
 - The waiting list shall be activated only on the expiry of the date of the merit list
 - The policy of refund of the Fee, in case of withdrawal, shall be clearly notified – notified on the website is as follows:
- Admission Cancellation and Refund of Fees:
 1. What is the Procedure for First Year B. Tech. Admission Cancellation for 2024?
Log in to your SETID Password. Fill the required admission information and then apply for cancellation
For B. Tech Admission Cancellation following is the link
<https://siufinance.ishinfo.com/UGStudentAdmission/login.aspx?ReturnUrl=%2fUGStudentAdmission>
 2. Refund Rules
Please click here for more details
<https://www.siu.edu.in/pdf/Refund-Rules-of-the-University.pdf>

12. Criteria and Weightage for Admission

- Describe each criterion with its respective weightage i.e. Admission Test, marks in the qualifying examination, etc.
As per eligibility criteria given on SIT, Nagpur website

SYMBIOSIS INSTITUTE OF TECHNOLOGY, MOUJE – WATHODA

Mandatory Disclosure Appendix 10

- Mention the minimum Level of acceptance, if any:

As per eligibility criteria given on SIT, Nagpur website

- Mention the cut-off Levels of percentage and percentile score of the candidates in the admission test for the last three years

1. Within the sanctioned intake

Admission Quota Category	General	Scheduled Caste	Scheduled Tribe	Differently-abled	Overall Reservation for Candidates domiciled in Nagpur(in all categories)
Admission Quota	74.5% of the sanctioned intake	15% of the sanctioned intake	7.5% of the sanctioned intake	3% of the sanctioned intake	25% of the sanctioned intake
Cut off/ last candidate admitted 2023-24	NA	NA	NA	NA	NA
Fees in Rupees	2.6 lac	2.6 lac	2.6 lac	2.6 lac	2.21 lac

2. Over & above sanctioned intake

Admission quota category	Jammu & Kashmiri Migrants	International students
Admission Quota	2 seats per Programme	20 % (including foreign nationals, PIO, and NRI)
Cut off/ last candidate admitted 2023-2024	NA	NA
Fees in Rupees		

13. List of Applicants

- List of candidate whose applications have been received along with percentile/percentages core for each of the qualifying examination in separate categories for open seats.
 - SITEEE -2023-24 Applicants- 2176 Paid-1286.
 - JEE/ASGEEE 2023-24 Applicants-879 Paid-673
- List of candidates who have applied along with percentage and percentile score for Management quotaseats (merit wise): NA

14. Results of Admission Under Management seats/Vacant seats

NA

SYMBIOSIS INSTITUTE OF TECHNOLOGY, MOUJE – WATHODA

Mandatory Disclosure Appendix 10

15. Information of Infrastructure and Other Resources Available

That the Land/Built-up area details given below in the Table are true and complete

Area Name	Room Id/Name	Apply for Site Change	Room Type	Area of Room in sqm	Readiness of Flooring	Readiness of Wall & Painting	Readiness of furniture and Fixtures	Readiness of Electrification and lightning	Air Conditioning
Instructional Area	B-02 / PHYSICS LAB	N	Laboratory	66.25	Ready	Ready	Ready	Ready	Not Available
	B-03 / COMPUTER LAB - 1	N	Laboratory	70.62	Ready	Ready	Ready	Ready	Available
	B-04 / COMPUTER LAB - 2	N	Laboratory	76.94	Ready	Ready	Ready	Ready	Available
	B-05 / BEEE LAB	N	Laboratory	83.69	Ready	Ready	Ready	Ready	Not Available
	B-06 / RESEARCH LAB	N	Research Laboratory	75.03	Ready	Not Ready	Not Ready	Not Ready	Planned
	B-07 / CHEMISTRY LAB	N	Laboratory	99.73	Ready	Ready	Ready	Ready	Not Available
	B-08 / WORKSHOP	N	Workshop	249.89	Ready	Ready	Ready	Ready	Available
	B-09 / COMPUTER LAB - 9	N	Computer Laboratory	74.57	Ready	Not Ready	Not Ready	Not Ready	Planned
	B-10 / PG LAB	N	Computer Laboratory	75.29	Ready	Not Ready	Not Ready	Not Ready	Planned
	F-01	N	Classroom	103.88	Ready	Ready	Ready	Ready	Available
	F-02	N	Classroom	101.17	Ready	Ready	Ready	Ready	Available
	F-05	N	Tutorial Room	36.17	Ready	Ready	Ready	Ready	Available
	F-07	N	Laboratory	101.17	Ready	Ready	Ready	Ready	Available
	F-09	N	Classroom	101.17	Ready	Ready	Ready	Ready	Available
	F-10	N	Classroom	103.88	Ready	Ready	Ready	Not Ready	Available
	F-11	N	Classroom	103.88	Ready	Ready	Ready	Ready	Available
	F-12	N	Classroom	101.17	Ready	Ready	Ready	Ready	Available
	F-15	N	Laboratory	101.17	Ready	Ready	Ready	Ready	Available
	F-17	N	Tutorial Room	36.17	Ready	Ready	Ready	Ready	Available
	F-19	N	Classroom	101.17	Ready	Ready	Ready	Ready	Available
	F-20	N	Classroom	103.88	Ready	Ready	Ready	Ready	Available
	G-15	N	Computer Laboratory	103.88	Ready	Ready	Ready	Ready	Available
	G-21	N	Computer Laboratory	101.79	Ready	Ready	Ready	Ready	Available
	G-22(SEMINAR HALL)	N	Seminar Hall	206.69	Ready	Ready	Ready	Ready	Available
	S-01	N	Tutorial Room	54.35	Ready	Ready	Ready	Ready	Available
	S-02	N	Classroom	75.35	Ready	Ready	Ready	Not Ready	Available
	S-03	N	Classroom	75.35	Ready	Ready	Ready	Not Ready	Available

SYMBIOSIS INSTITUTE OF TECHNOLOGY, MOUJE – WATHODA

Mandatory Disclosure Appendix 10

S-05	N	Computer Laboratory	100.71	Ready	Ready	Ready	Not Ready	Available	
S-06	N	Computer Laboratory	101.44	Ready	Ready	Ready	Ready	Available	
S-07	N	Computer Laboratory	101.17	Ready	Ready	Ready	Ready	Available	
S-09	N	Classroom	75.35	Ready	Ready	Ready	Not Ready	Available	
S-10	N	Classroom	75.35	Ready	Ready	Ready	Not Ready	Available	
S-11	N	Tutorial Room	54.35	Ready	Ready	Ready	Not Ready	Available	
S-12	N	Classroom	54.35	Ready	Ready	Ready	Not Ready	Available	
S-17	N	Computer Laboratory	101.17	Ready	Ready	Ready	Not Ready	Available	
S-18	N	Computer Laboratory	101.44	Ready	Ready	Ready	Ready	Available	
S-19	N	Computer Laboratory	100.71	Ready	Ready	Ready	Not Ready	Available	
S-20	N	CAD Center	151.52	Ready	Ready	Ready	Ready	Available	
Total Instructional Area			3601.86						

Area Name	Room Id/Name	Apply for Site Change	Room Type	Area of Room in sqm	Readiness of Flooring	Readiness of Wall & Painting	Readiness of furniture and Fixtures	Readiness of Electrification and lightning	Air Conditioning
Common Facility	B-01	N	Language Laboratory	82.76	Ready	Ready	Ready	Ready	Available
	CENTRAL LIBRARY	N	Library & Reading Room	532.97	Ready	Ready	Ready	Ready	Available
	G-20	N	Computer Center	238.9	Ready	Ready	Ready	Ready	Available
Total Common Facility Area				854.63					

Area Name	Room Id/Name	Apply for Site Change	Room Type	Area of Room in sqm	Readiness of Flooring	Readiness of Wall & Painting	Readiness of furniture and Fixtures	Readiness of Electrification and lightning	Air Conditioning
Amenities	BOYS TOILET FF-A WING	N	Toilet	22.64	Ready	Ready	Ready	Ready	Not Available
	BOYS TOILET FF-B WING	N	Toilet	22.64	Ready	Ready	Ready	Ready	Not Available
	BOYS TOILET GF-A WING	N	Toilet	22.64	Ready	Ready	Ready	Ready	Not Available
	BOYS TOILET GF-B WING	N	Toilet	22.64	Ready	Ready	Ready	Ready	Not Available
	BOYS TOILET SF-A WING	N	Toilet	22.64	Ready	Ready	Ready	Ready	Not Available
	BOYS TOILET SF-B WING	N	Toilet	22.64	Ready	Ready	Ready	Ready	Not Available
	DINING ROOM (MESS)	N	Cafeteria	3,310.21	Ready	Ready	Ready	Ready	Not Available
	GIRLS TOILET FF-A WING	N	Toilet	22.64	Ready	Ready	Ready	Ready	Not Available
	GIRLS TOILET FF-B WING	N	Toilet	22.64	Ready	Ready	Ready	Ready	Not Available

SYMBIOSIS INSTITUTE OF TECHNOLOGY, MOUJE – WATHODA

Mandatory Disclosure Appendix 10

GIRLS TOILET GF-A WING	N	Toilet	22.64	Ready	Ready	Ready	Ready	Not Available	
GIRLS TOILET GF-B WING	N	Toilet	22.64	Ready	Ready	Ready	Ready	Not Available	
GIRLS TOILET SF-A WING	N	Toilet	22.64	Ready	Ready	Ready	Ready	Not Available	
GIRLS TOILET SF-B WING	N	Toilet	22.64	Ready	Ready	Ready	Ready	Not Available	
HANDICAPPED TOILET FF-A WING	N	Toilet	7.49	Ready	Ready	Ready	Ready	Not Available	
HANDICAPPED TOILET FF-B WING	N	Toilet	7.49	Ready	Ready	Ready	Ready	Not Available	
HANDICAPPED TOILET GF-A WING	N	Toilet	7.49	Ready	Ready	Ready	Ready	Not Available	
HANDICAPPED TOILET GF-B WING	N	Toilet	7.49	Ready	Ready	Ready	Ready	Not Available	
HANDICAPPED TOILET SF-A WING	N	Toilet	7.49	Ready	Ready	Ready	Ready	Not Available	
HANDICAPPED TOILET SF-B WING	N	Toilet	7.49	Ready	Ready	Ready	Ready	Not Available	
HEALTHCARE CENTRE	N	First aid cum Sick Room	41.3	Ready	Ready	Ready	Ready	Available	
S-13	N	Boys Common Room	75.35	Ready	Ready	Ready	Ready	Available	
S-14	N	Girls Common Room	75.35	Ready	Ready	Ready	Ready	Available	
XEROX SHOP	N	Stationery Store	33.44	Ready	Ready	Ready	Ready	Not Available	
Total Amenities Area			3852.27						

Area Name	Room Id/Name	Apply for Site Change	Room Type	Area of Room in sqm	Readiness of Flooring	Readiness of Wall & Painting	Readiness of furniture and Fixtures	Readiness of Electrification and lightning	Air Conditioning
Administrative Area	B-11	N	Maintenance	80.73	Ready	Ready	Ready	Ready	Not Available
	B-12	N	Other Office	28.35	Ready	Ready	Not Ready	Not Ready	Not Available
	CENTRAL STORE	N	Central Store	30	Ready	Ready	Ready	Ready	Not Available
	F-04	N	Office All Inclusive	100.71	Ready	Ready	Ready	Ready	Available
	F-06	N	Faculty Room	50.95	Ready	Ready	Ready	Ready	Available
	F-16	N	Faculty Room	50.95	Ready	Ready	Ready	Ready	Available
	F-17	N	Placement Office	100.71	Ready	Ready	Ready	Ready	Available
	G-01	N	Office All Inclusive	53.16	Ready	Ready	Ready	Ready	Available
G-02	N	Office All Inclusive	100.9	Ready	Ready	Ready	Ready	Available	

SYMBIOSIS INSTITUTE OF TECHNOLOGY, MOUJE – WATHODA

Mandatory Disclosure Appendix 10

G-03	N	Other Office	49.36	Ready	Ready	Ready	Ready	Available
G-04 (B)	N	Housekeeping	10	Ready	Ready	Ready	Ready	Available
G-05	N	Office All Inclusive	14.64	Ready	Ready	Ready	Ready	Available
G-06	N	Office All Inclusive	32.46	Ready	Ready	Ready	Ready	Available
G-07	N	Principal Directors Office	49.14	Ready	Ready	Ready	Ready	Available
G-08	N	Board Room	60.77	Ready	Ready	Ready	Ready	Available
G-09	N	Pantry for Staff	9.09	Ready	Ready	Ready	Ready	Available
G-10	N	Department Office	80.82	Ready	Ready	Ready	Ready	Available
G-10-A	N	Cabin for Head of Dept	12	Ready	Ready	Ready	Ready	Available
G-13	N	Other Office	39.28	Ready	Ready	Ready	Ready	Available
G-14	N	Faculty Room	50.18	Ready	Ready	Ready	Ready	Available
G-16	N	Exam Control Office	103.88	Ready	Ready	Ready	Ready	Available
G-17	N	Office All Inclusive	100.63	Ready	Ready	Ready	Ready	Available
G-18 (A)	N	Maintenance	10	Ready	Ready	Ready	Ready	Available
S-21	N	Faculty Room	54.35	Ready	Ready	Ready	Ready	Available
SECURITY CABIN	N	Security	10.42	Ready	Ready	Ready	Ready	Not Available
Total Administrative Area			1283.48					

Social Initiatives

List of facilities available Sports

- Games and Sports Facilities
 - Outdoor Sports
 - Indoor Sports
 - Recreation and Wellness centers
- Extra-Curricular Activities
 - Different cultural and technical events are organized for the students throughout the semester like Reverb and Tech-Fest.
 - Soft Skill Development Facilities

Teaching Learning Process

Internal Continuous Evaluation System and place

Semester System: Continuous Evaluation and Final Examination

- For theory classes: the total for internal continuous evaluation for UG is 40% and for the End Semester Examination, it is 60.
- For laboratory courses: 100% continuous assessment Internal evaluation comprises assignments and surprise tests and quizzes.
- Based on the performance of tests later grades are awarded and CGPA is calculated.

16. Enrolment placement details of students in last 3 years

NA

17. List of Research Projects/Consultancy Works

NA

Number of Projects carried out, funding agency, Grant received

NA

Funded Research Project (sitnagpur.edu.in)

NA

Publications (if any) out of research in last three years' out

NA

Masters projects Industry Linkage and MoU's with Industries

Sr. No.	Name of Company	MOU Area	Faculty in Charge
1	Crypto Forensic Technology, Nagpur	They provide Cyber Security Services & Cyber Forensic Services to Law Enforcements Agencies, IT/ITES companies, MSME & individuals.	Dr. Sagarkumar Badhiye Assistant Professor (Sr. Scale)
2	IT-NETWORKZ Infosystems Pvt. Ltd., Nagpur	They provide Software, Web Development services & support to IT/ITES companies, MSME & individuals. Also, International assessment & IT training support are offered to UG, PG, & working professional.	Dr. Pradnya Borkar Assistant Professor (Sr. Scale)
3	TPG Software Pvt. Ltd., Delhi	They develop digital products and provides innovative services like platform modernization, revenue diversification etc.	Dr. Poorva Agrawal Assistant Professor (Sr. Scale)
4	Nice Software Solutions Pvt. Ltd. Nagpur	They Specialize in Data Analytics, data management, and cloud services, using the top applications in the industry.	Prof. Monali Gulhane Teaching Associate (CSE)
5	Persistent Systems Ltd., Pune	They provide services as Digital Strategy & Design, Software Product Engineering, CX Transformation, Cloud & Infrastructure, Intelligent Automation, Enterprise IT Security, Data & Analytics, Application Development and Management.	Dr. M. S. Sejul Registrar (SIU)
6	IndUS Entrepreneurs, Nagpur	They provide know how to permit smooth and effective technology and knowledge transfer, assist student entrepreneurs and startups who approach them through the institute to solve their business or technical challenges, and assist with building mentor connections.	Dr. Nilesh Shelke Assistant Professor

18. LoA and subsequent EoA till the current Academic Year

[Extension of Approval-AICTE](#)

19. Accounted audited statement for the last three years

NA

20. Best Practices Adopted

Project Based Learning course is introduced in which a group of 3 to 4 students identify the problem and work on it as a small project. It can be called as mini project. Students can contact the faculty member to understand the problem. Apart from PBL few more courses like Tinker lab, Creative thinking Critical thinking, Design thinking, Entrepreneurship venture and Capstone courses have been introduced from first year till final year B. Tech. students. A provision of Flexi courses, which can be designed just before the start of the semester based on the current technological demand is made available.

Curriculum is revised as per industry requirement and needs.

The alumni representative is a member of Quality Improvement cell (QIC) the suggestions received from alumni are invited and incorporated as required in the curriculum.

To identify and invite industry experts to deliver content beyond syllabus and make students aware of contemporary issues and engineering practices adopted in the industry.

To provide industry exposure to students through internships in industry, industry visits and enable them to pick up skills besides what is being imparted in the classrooms.

In autonomous structure students are allowed to undergo semester wide internship program.

Obtain industry sponsored final year projects.

Service Learning: The institute believes that we have a responsibility towards society hence Service Learning is a mandatory subject for the students so that students can become responsible towards society, the environment, global issues, etc. and develop into responsible citizens. The Symbiosis International (Deemed University) SIU launched the Symbiosis Community Outreach Programme and Extension (SCOPE) on 2nd July 2012 with the objective of positively impacting the community around SIU as a part of its health promoting initiatives. SCOPE through its twin arms of healthcare and non-health initiatives is working towards a sustainable, comprehensive and integrated development of the 22 identified villages located in the vicinity of main campus of SIU at Mulshi taluka of Pune district. The objective is to equip the community to identify, and promote its own health initiatives, by taking proactive, community driven sustainable socio-economic and environmental efforts. SIU is committed to the principles of — ‘Health for All’ and sustainable development. This is an asset to the university staff, students and to the communities in which they are located and to the wider society where these students will eventually assume professional roles.

Membership of different professional bodies like ACM, ISTE, IEEE, CSI have been taken for students which can help the students to grow beyond class rooms. SIT Nagpur Students chapter is chartered and different activities are being conducted under it.

Training & Placement Cell also fosters relations with the industries as a part of the placement drive. In order to understand industry needs the cell hosts an HR meet every year. The meet involves lectures/interactions with eminent industrialists, panel discussions between students, faculty and industry experts which gives valuable insights of the placements scenario and recent developments at local and global levels that serve as an input for identifying training needs of our students in order to make them employable.

Training is provided to each student regarding Certificate in Covid-19 Care for community by SUHRC.

Sport facilities are available for students.

Students are motivated for the participation in different curricular/ co-curricular and extracurricular activities. Health check-ups and medical facilities are available for all the students.

Different events; Tech-Fest, reverb, hackathon, literary club, departmental club, student's chapters are carried out throughout the year.

Entrepreneurship Cell: Entrepreneurship Cells has been introduced in Symbiosis Institute of Technology, Nagpur to play a crucial role in nurturing the next generation of entrepreneurs by providing them with the necessary support, guidance, and resources to turn their entrepreneurial dreams into reality. At E-Cell, we aim to inspire university students to start their ventures and dispel the many fears that surround starting one's own company. To this end, we conduct several events, seminars, and workshops both for students of and beyond our college to cultivate this entrepreneurial spirit.

E Cell prepares students pursuing their entrepreneurial venture for the following-

- Orientation and Motivation
- Kick starting the Entrepreneurial campus
- Business Planning workshops
- Prototype to commercialization- draft preparation
- Investors
- Team Building
- Managing funds/ entrepreneurship finance.

Innovation Cell: Innovation Cell (I-Cell), Symbiosis Institute of Technology, Nagpur, has been established to practice innovation based on experiential learning to inculcate excellence within Technocrats, Researchers, and Inventors (TRI). Thereby developing and fostering a business model based on the latest technology, having innovation and scalability as an essential component with the highest profit and lowest risk. Members of I-Cell are working with the fullest conviction and capacity to align the indomitable minds of SIT'ians with the statement at the top. In addition, it has been envisioned to become a world-class technology-driven innovation center and provide a universal platform for innovative development for the benefit of budding entrepreneurs, corporate houses & society at large.